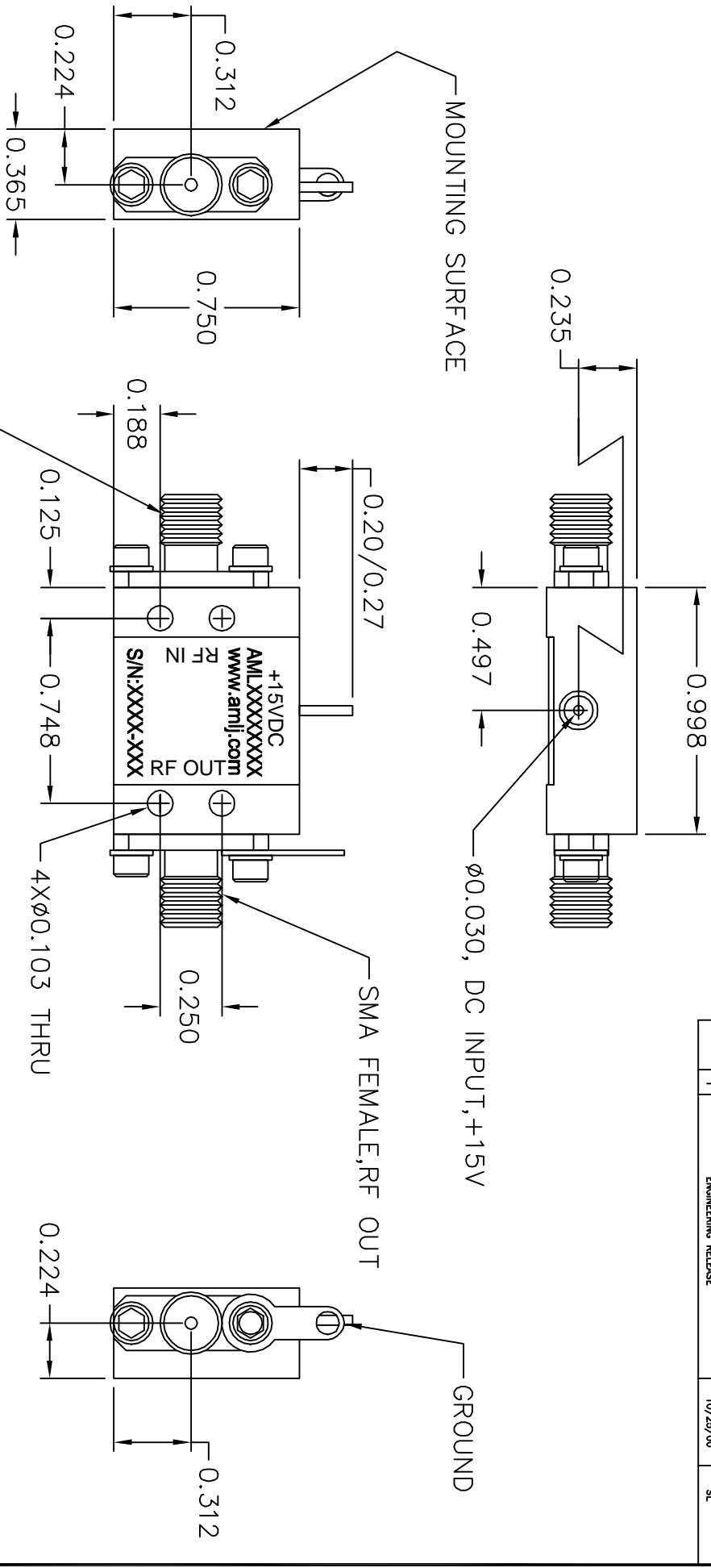


REVISONS				
ECN#	REV	DESCRIPTION	DATE	APPROVED
	1	ENGINEERING RELEASE	10/25/00	SL



NOTES:

- MARK LABEL (003-0231) AS SHOWN.  
MARK SERIAL NUMBER, DATE CODE AND MODEL NUMBER AS PER TRAVELER.

UNLESS OTHERWISE SPECIFIED DIMENSIONS ARE IN INCHES TOLERANCES ARE: XX ± .005 X ± .008 Ø ± .008		ANGLES = 5°		HARD ANGLE PROJECTION	
FINISH ELECTROLESS IN MIL-C-26074C 0.0003/0.0005 THICK		DESIGNED BY SH		CHECK BY SH	
MATERIAL ALUM ALLOY 6061		APPROVED ENGR		DATE	
DD NOT SCALE DRAWING		RELEASED BY		DATE: 7/30/01	
TITLE DUTLINE CATALOG (B3)		SCALE: 2X		GENERAL FABRICATION NOTES: UNLESS OTHERWISE NOTED 1. REMOVE BURRS AND BREAK SHARP EDGES. 2. ALL DIMENSIONS TO BE 90° 3. ALL BENDS TO BE 90° 4. 63/ MAX. MACHINE FINISH. GENERAL ASSEMBLY NOTES: (UNLESS OTHERWISE NOTED) 1. ASSEMBLE AS PER WORKMANSHIP REQUIREMENTS OF IPC-A-610, CLASS 2	
SHEET NUMBER 1 OF 1		BOM NUMBER 002-0114		SIZE B	
DRAWING NUMBER 002-0114		REV 1		DATE 10/25/00	