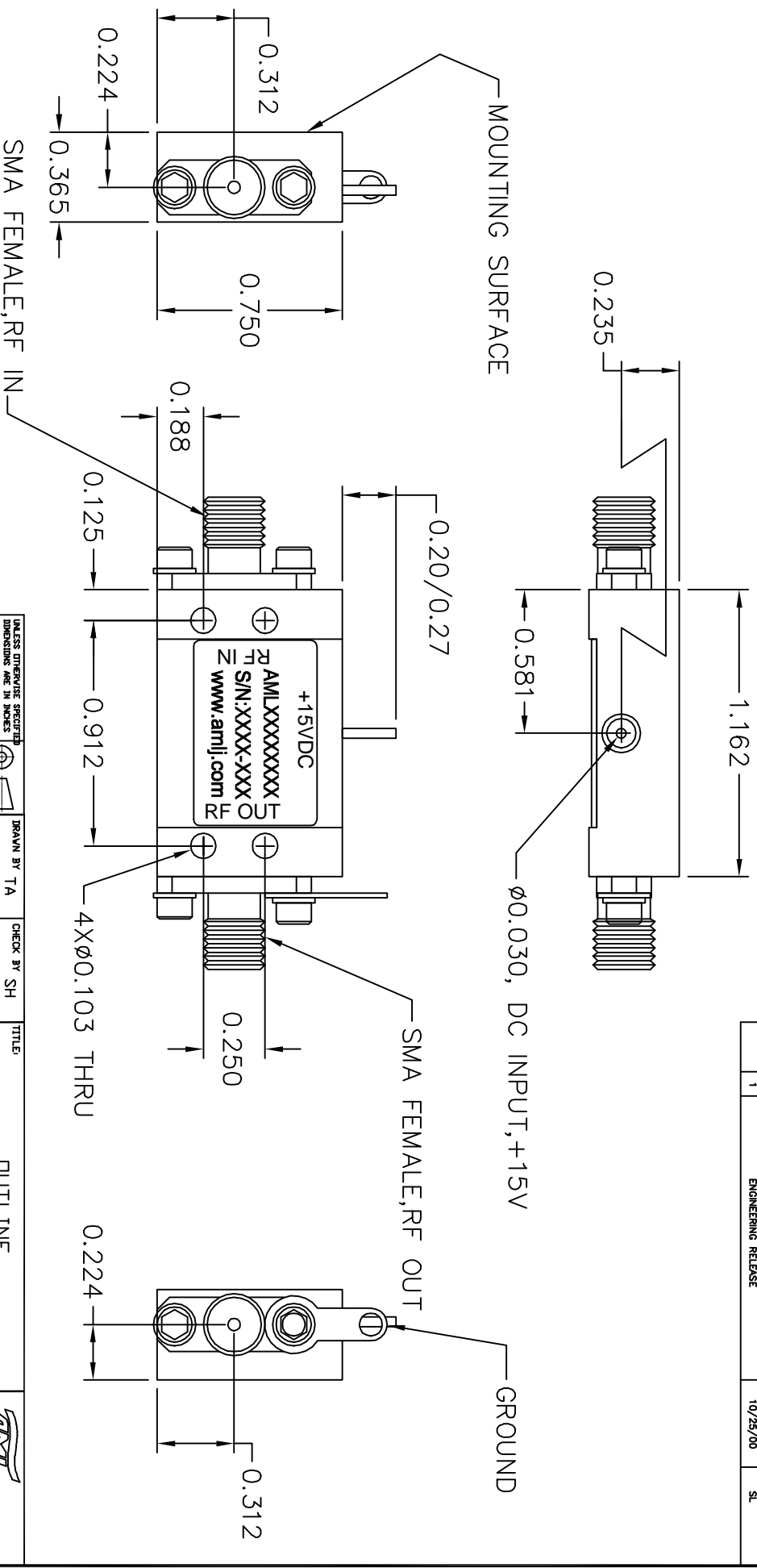


REVISIONS				
ECN#	REV	DESCRIPTION	DATE	APPROVED
	1	ENGINEERING RELEASE	10/25/00	SL



NOTES:
 1. MARK LABEL (003-0231) AS SHOWN.
 MARK SERIAL NUMBER, DATE CODE AND
 MODEL NUMBER AS PER TRAVELER.

UNLESS OTHERWISE SPECIFIED DIMENSIONS ARE IN INCHES TOLERANCES ARE: XX & 0.01 XXX & 0.005		DRAWN BY TA		CHECK BY SH	
FINISH: ELECTROLESS IN PLATING / 6005 FC 0.0003/0.0005 THICK		DESIGNED BY SH		DATE	
MATERIAL: ALUM ALLOY 6061		APPROVED		DATE	
DD NOT SCALE DRAWING		ENGR		ENGR	
		HFG ENGR		DA	
		RELEASED BY:			
TITLE: DUTLINE CATALOG (B4)		SCALE: 2X		DATE: 7/30/01	
GENERAL FABRICATION NOTES: UNLESS OTHERWISE NOTED: 1. REMOVE ALL BURS AND BREAK SHARP EDGES. 2. ALL BENDS TO BE 90° 3. ALL BENDS TO BE 90° 4. 63° MAX. MACHINE FINISH.		SHEET NUMBER: 1 OF 1		SIZE: B	
GENERAL ASSEMBLY NOTES: (UNLESS OTHERWISE NOTED) 1. ASSEMBLE AS PER WORKMANSHIP REQUIREMENTS OF IPC-A-610, CLASS 2		DRAWING NUMBER: 002-0115		REV: 1	