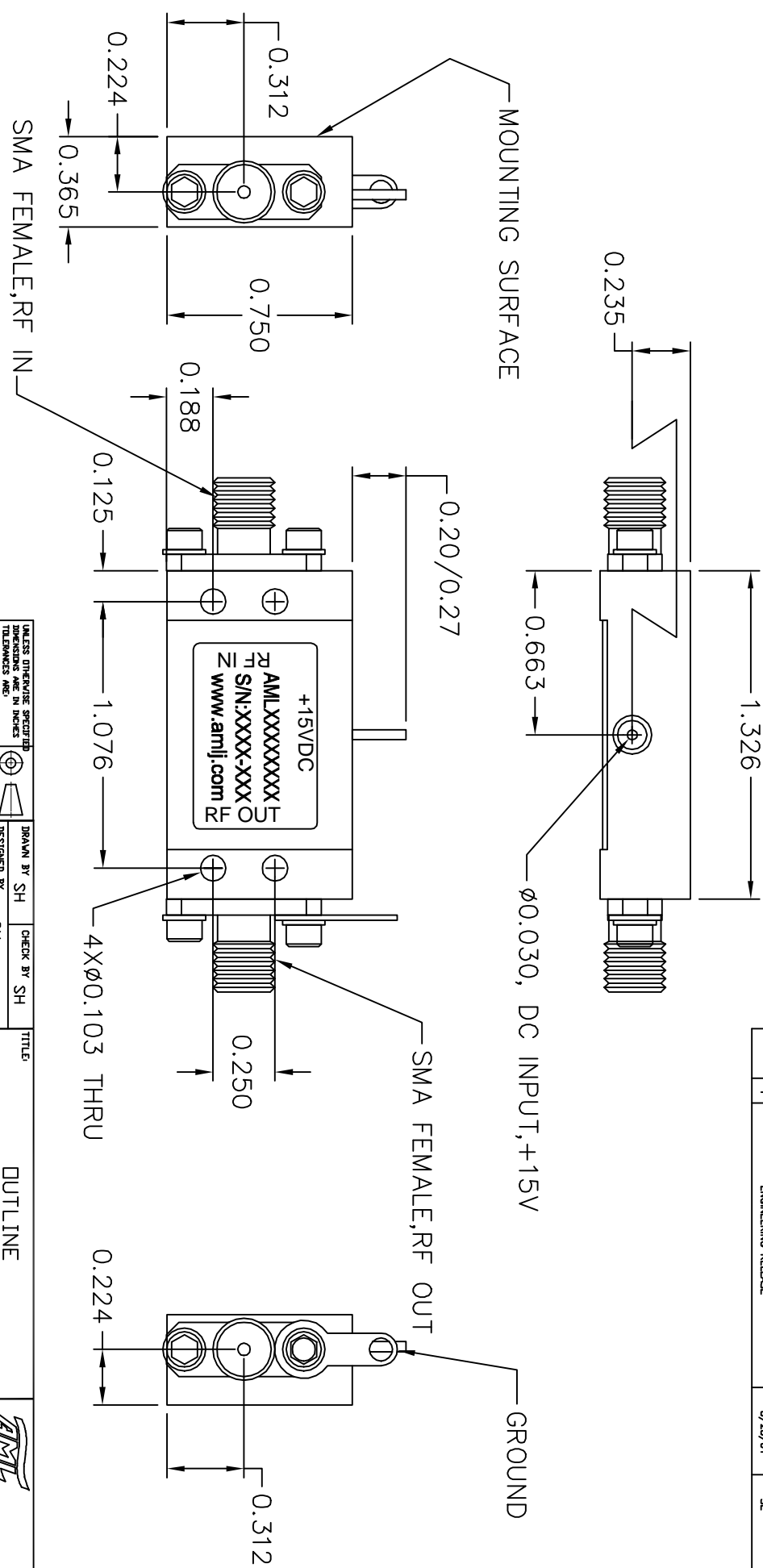


REVISIONS				
ECN#	REV	DESCRIPTION	DATE	APPROVED
	1	ENGINEERING RELEASE	8/28/01	SL



NOTES:
 1. MARK LABEL (003-0231) AS SHOWN.
 MARK SERIAL NUMBER, DATE CODE AND
 MODEL NUMBER AS PER TRAVELER.

UNLESS OTHERWISE SPECIFIED DIMENSIONS ARE IN INCHES DECIMALS PER ANGLES XX ± 0.01 XXX ± 0.03		DRAWN BY SH		CHECK BY SH	
THIRD ANGLE PROJECTION		DESIGNED BY SH		DATE	
APPROVED		ENGR		ENGR	
MATERIAL ALUM ALLOY 6061		ENGR		ENGR	
FINISH ELECTROLESS NI MIL-C-26074C 0.0003/0.0005 THICK		MFG ENGR		MFG ENGR	
DO NOT SCALE DRAWING		RELEASED BY:		RELEASED BY:	
TITLE OUTLINE CATALOG (BS)		SCALE: 2X		DATE: 8/28/01	
GENERAL FABRICATION NOTES: (UNLESS OTHERWISE NOTED) 1. REMOVE ALL BURRS AND BREAK SHARP EDGES. 2. ALL DIMENSIONS TO BE 90°. 3. ALL DIMENSIONS TO BE 90°. 4. MAX. MACHINE FINISH.		GENERAL ASSEMBLY NOTES: (UNLESS OTHERWISE NOTED) 1. ASSEMBLE AS PER WORKMANSHIP REQUIREMENTS OF IPC-A-610, CLASS 2		SHEET NUMBER 1 OF 1	
CAMARILLO CALIFORNIA, USA		BOM NUMBER 002-0116		SIZE B	
CAMARILLO COMMUNICATIONS		DRAWING NUMBER 002-0116		REV 1	