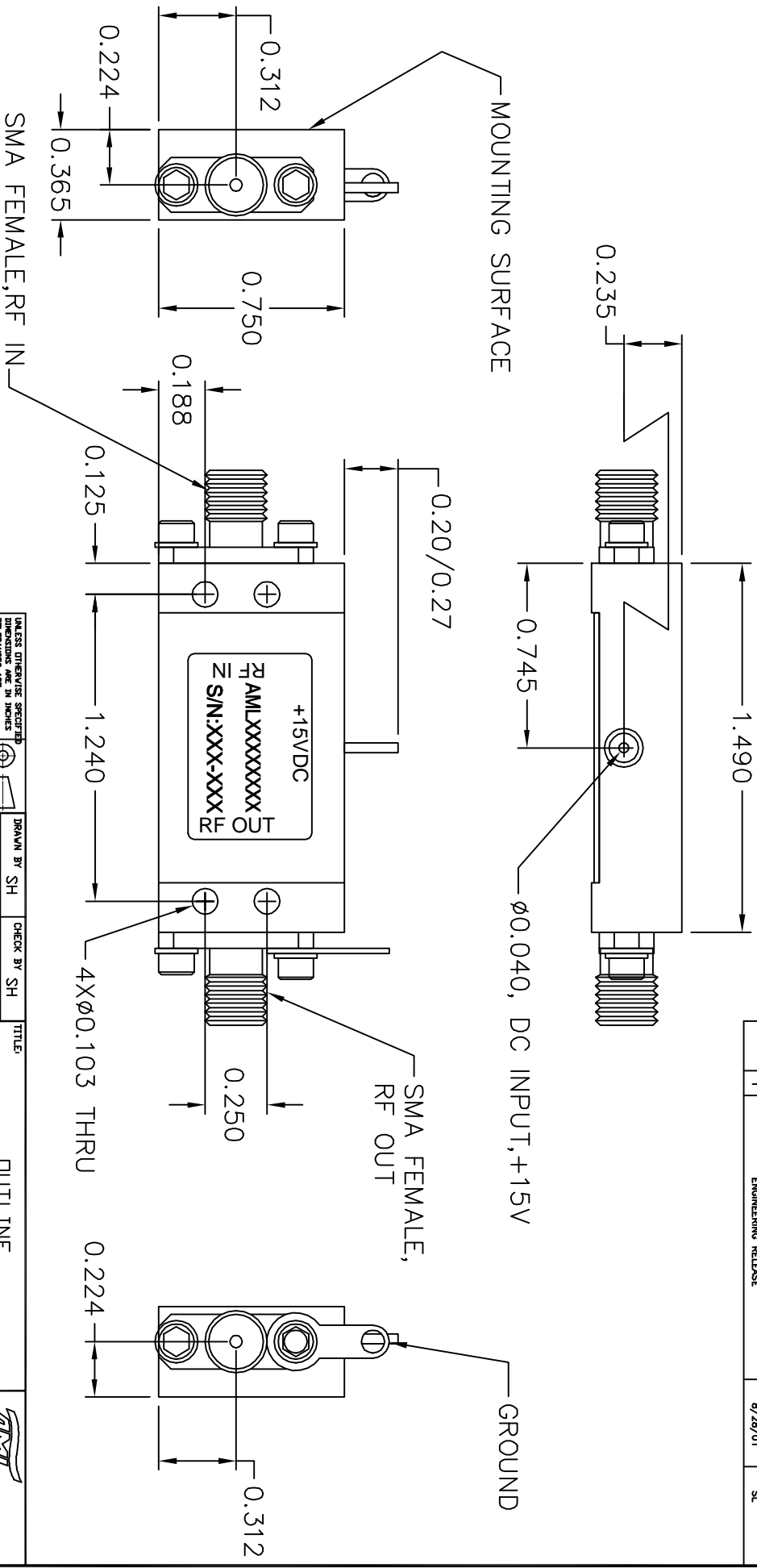


REVISIONS				
ECN#	REV	DESCRIPTION	DATE	APPROVED
	1	ENGINEERING RELEASE	8/28/01	SL



NOTES:
 1. MARK LABEL (003-0231) AS SHOWN.
 MARK SERIAL NUMBER, DATE CODE AND
 MODEL NUMBER AS PER TRAVELER.

DIMENSIONS UNLESS SPECIFIED DECIMALS ARE IN INCHES TOLERANCES ARE: .XX ± .003 .XXX ± .005 ANGLES = 3° THIRD ANGLE PROJECTION		DRAWN BY SH CHECK BY SH DESIGNED BY SH APPROVED DATE		TITLE DUTLINE CATALOG (B6)	
FINISH ELECTROLESS Ni MIL-C-2607C 0.0005/0.0005 THICK DD NDT SCALE DRAWING		MATERIAL ALUM ALLOY 6061 ENGR HFG ENGR QA RELEASED BY:		SCALE: 2X DATE: 8/28/01 GENERAL FABRICATION NOTES: (UNLESS OTHERWISE NOTED) 1. REMOVE ALL BURRS AND BREAK SHARP EDGES. 2. ALL ENDS TO BE 90° 3. ALL ENDS TO BE 90° 4. 63° MAX. MACHINE FINISH. GENERAL ASSEMBLY NOTES: (UNLESS OTHERWISE NOTED) 1. ASSEMBLE AS PER WORKMANSHIP REQUIREMENTS OF IPC-A-610, CLASS 2	
SHEET NUMBER 1 OF 1 DRAWING NUMBER 002-0117		BOM NUMBER 002-0117		SIZE B REV 1	