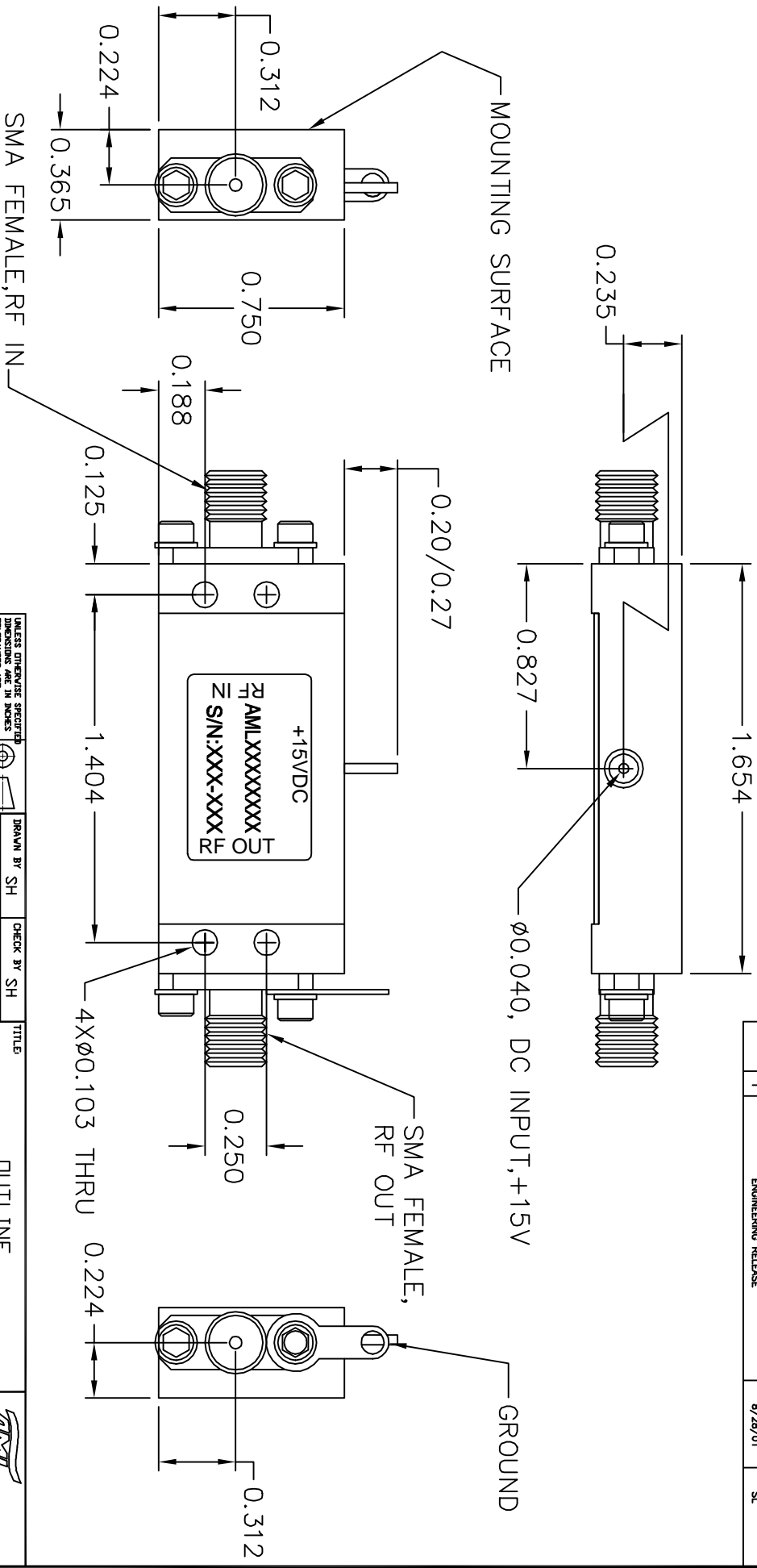


REVISONS				
ECN#	REV	DESCRIPTION	DATE	APPROVED
	1	ENGINEERING RELEASE	8/28/01	SL



NOTES:
 1. MARK LABEL (003-0231) AS SHOWN.
 MARK SERIAL NUMBER, DATE CODE AND
 MODEL NUMBER AS PER TRAVELER.

UNLESS OTHERWISE SPECIFIED DIMENSIONS ARE IN INCHES TOLERANCES ARE: XX ± .01 XXX ± .005		DRAWN BY SH		CHECK BY SH	
FINISH ELECTROLESS IN MIL C-2607 0.0005/0.0005 THICK		DESIGNED BY SH		DATE	
MATERIAL ALUM ALLOY 6061		APPROVED		DATE	
DD NOT SCALE DRAWING		ENGR		ENGR	
		HFG ENGR		DA	
		RELEASED BY:			
TITLE DUTLINE CATALOG (B7)		SCALE: 2X		DATE: 8/28/01	
GENERAL FABRICATION NOTES: (UNLESS OTHERWISE NOTED) 1. REMOVE ALL BURRS AND BREAK SHARP EDGES. 2. ALL ENDS TO BE 90°. 3. ALL ENDS TO BE 90°. 4. 63° MAX. MACHINE FINISH.		SHEET NUMBER 1 OF 1		SIZE B	
GENERAL ASSEMBLY NOTES: (UNLESS OTHERWISE NOTED) 1. ASSEMBLE AS PER WORKMANSHIP REQUIREMENTS OF FCC-A-810, CLASS 2		DRAWING NUMBER 002-0118		REV 1	
AMLC COMMUNICATIONS CAMARILLO, CALIFORNIA, USA		BOM NUMBER			