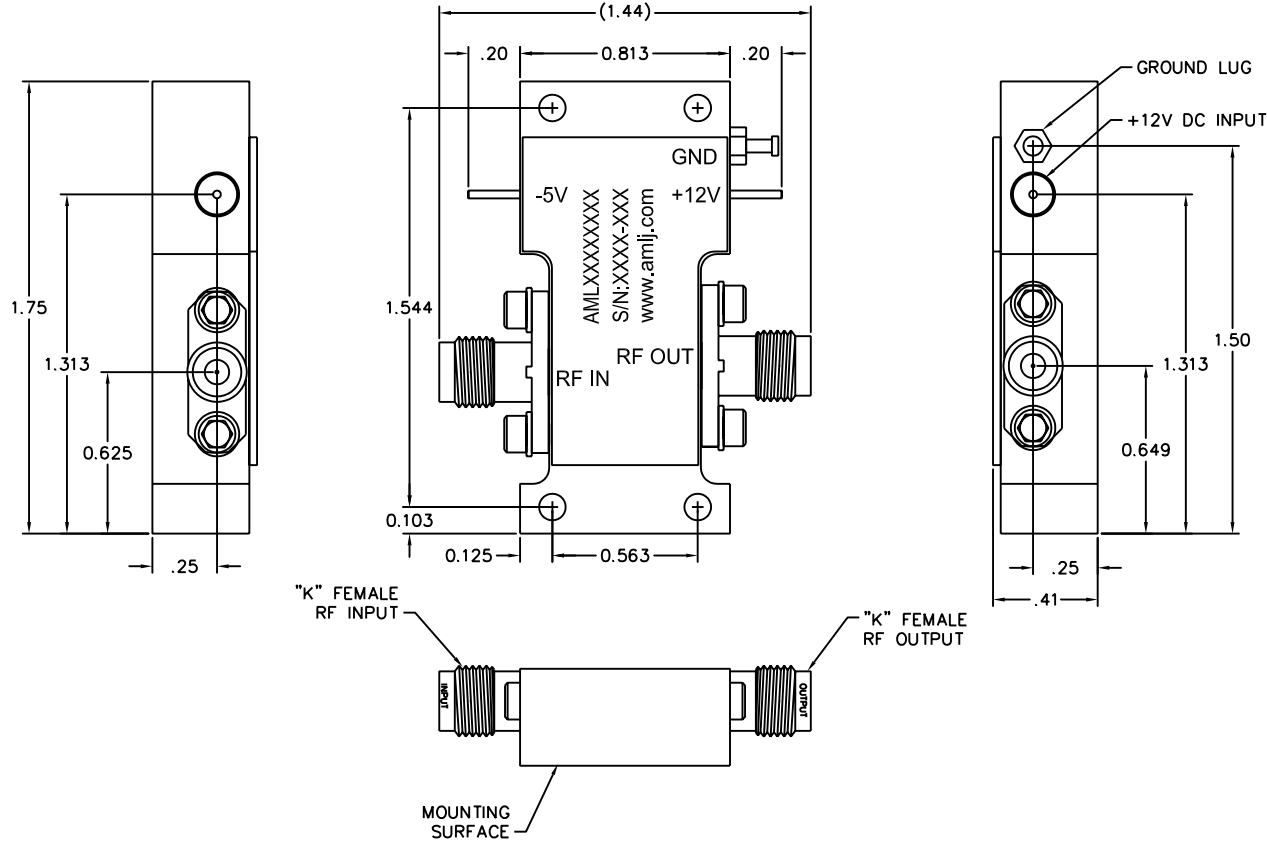


This Document is the property of AML Communications, Inc. The information contained in this Document shall not be reproduced, copied, released or made available to any third parties without prior written authorization. Utilizing information contained in this Document for manufacture or sale of products without prior written authorization is strictly prohibited.

REVISIONS				
ECO#	REV	DESCRIPTION	DATE	APPROVED
	-	RELEASE	2/15/07	M. CALAYAN



NOTES:

1. SILKSCREEN UNIT AS SHOWN. MARK SERIAL NUMBER, DATE CODE AND MODEL NUMBER AS PER TRAVELER.

UNLESS OTHERWISE SPECIFIED DIMENSIONS ARE IN INCHES TOLERANCES ARE: DECIMALS ANGLES .XX ± 0.01 ± 2° .XXX ± 0.003	 THIRD ANGLE PROJECTION	DRAWN BY OM CHECK BY SH	TITLE: OUTLINE, 8-40 GHz, AMPLIFIER CATALOG		 CAMARILLO, CALIFORNIA, USA
		DESIGNED BY DP			
MATERIAL ALUM ALLOY 6061-T6	ENGR	SCALE: NTS DATE: 2/8/07		BOM NUMBER	
FINISH NICKEL PLATE PER MIL-C-26074 300-500 uIN THK	ENGR MFG ENGR QA	GENERAL FABRICATION NOTES: (UNLESS OTHERWISE SPECIFIED) 1. REMOVE ALL BURRS AND BREAK SHARP EDGES .005 MAX. 2. DIMENSION(S) APPLY AFTER FINISH. 3. $\sqrt{32}$ MAX. MACHINE FINISH. 4. INTERPRET DRAWING PER ANSI/ASME Y14.5M-1994		SHEET NUMBER 1 OF 1	SIZE B
DO NOT SCALE DRAWING	RELEASED BY:			DRAWING NUMBER 002-0537	REV -