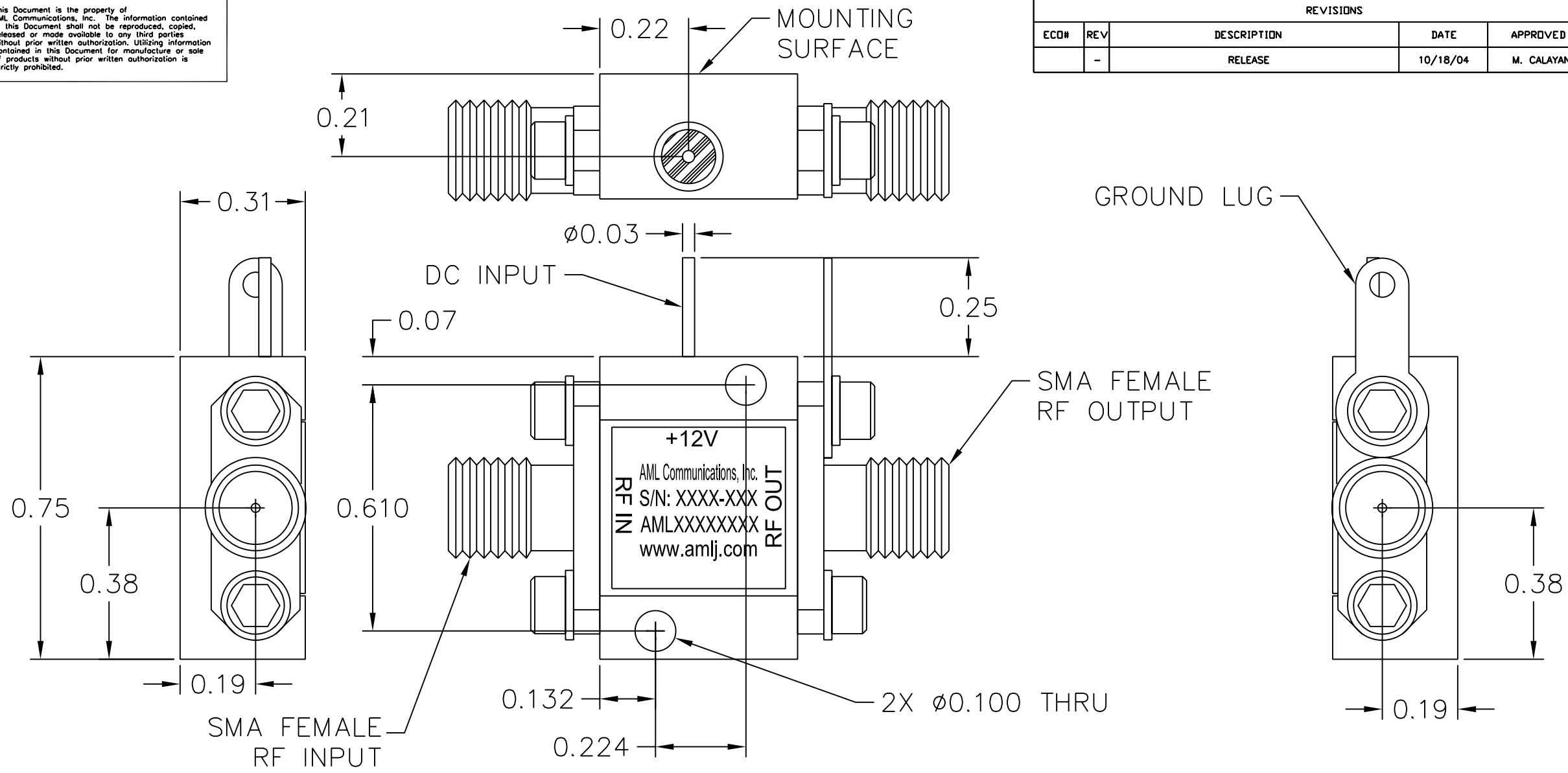



This Document is the property of AML Communications, Inc. The information contained in this Document shall not be reproduced, copied, released or made available to any third parties without prior written authorization. Utilizing information contained in this Document for manufacture or sale of products without prior written authorization is strictly prohibited.

REVISIONS				
ECD#	REV	DESCRIPTION	DATE	APPROVED
	-	RELEASE	10/18/04	M. CALAYAN



NOTES:

- MARK LABEL (003-0231) AS SHOWN. MARK SERIAL NUMBER AND DATE CODE AS PER TRAVELER. TRIM LABEL TO FIT.

UNLESS OTHERWISE SPECIFIED DIMENSIONS ARE IN INCHES TOLERANCES ARE: DECIMALS ANGLES .XX ± 0.02 ± 5° .XXX ± 0.010	THIRD ANGLE PROJECTION	DRAWN BY SH	CHECK BY SH	TITLE: OUTLINE CATALOG (M1)	 CAMARILLO, CALIFORNIA, USA	
		DESIGNED BY SH				SCALE: NTS
MATERIAL KOVAR		ENGR Glenn Nakao 10/18/04		GENERAL FABRICATION NOTES: (UNLESS OTHERWISE NOTED) 1. REMOVE ALL BURRS AND BREAK SHARP EDGES. 2. DIMENSION(S) APPLY AFTER FINISH. 3. ALL BENDS TO BE 90°. 4. $\sqrt{\text{MAX. MACHINE FINISH.}}$	BOM NUMBER	
FINISH NICKEL PLATE PER MIL-C-26074		MFG ENGR			SHEET NUMBER 1 OF 1	SIZE B
DO NOT SCALE DRAWING		QA Greg Isler 10/18/04			DRAWING NUMBER 002-0455	REV -
		RELEASED BY: Mike Calayan 10/18/04				