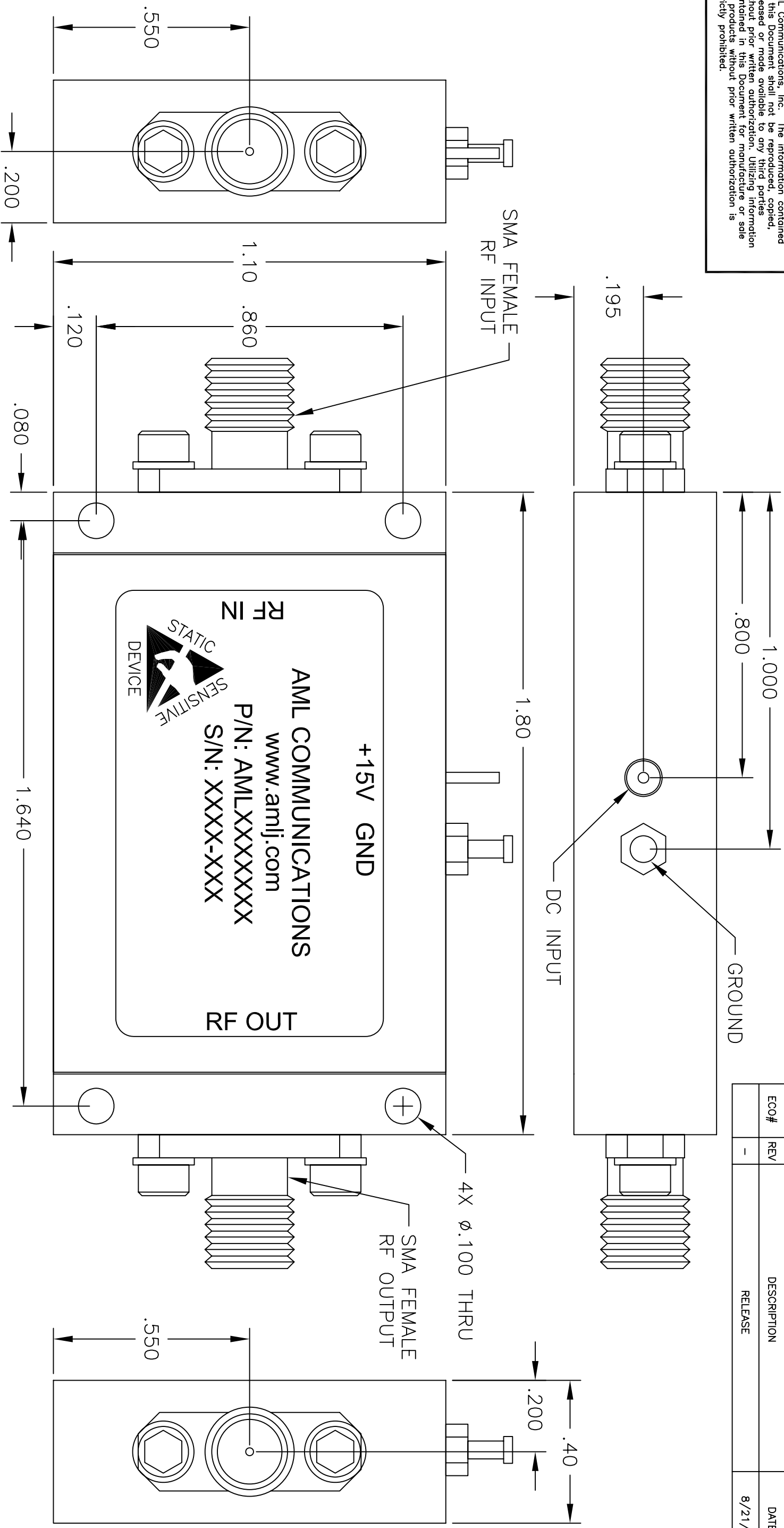


This Document is the property of AML Communications, Inc. The information contained in this Document shall not be reproduced, copied, released or made available to any third parties without prior written authorization. Utilizing information contained in this Document for manufacture or sale of products without prior written authorization is strictly prohibited.

REVISIONS

ECO #	REV	DESCRIPTION	DATE	APPROVED
-	-	RELEASE	8/21/03	M. CALAYAN



NOTES:

1. MARK LABEL AS SHOWN. MARK SERIAL NUMBER, DATE CODE AND MODEL NUMBER AS PER TRAVELER.

UNLESS OTHERWISE SPECIFIED DIMENSIONS ARE IN INCHES TOLERANCES ARE: DECIMALS ANGLES XX ± 0.01 ± 5° .XXX ± 0.005		THIRD ANGLE PROJECTION	
MATERIAL: ALUM ALLOY		DRAWN BY: JH	
FINISH: NICKEL PLATED		CHECK BY: SH	
DO NOT SCALE DRAWING		DESIGNED BY: AML	
		DATE:	
		APPROVED:	
		ENGR: Thai Tran 8/20/03	
		ENGR:	
		MFG ENGR: Della Vito 8/21/03	
		QA: Greg Isler 8/21/03	
		RELEASED BY:	
TITLE: OUTLINE 0L39		SCALE: NTS	
DATE: 3/15/95		GENERAL FABRICATION NOTES: (UNLESS OTHERWISE NOTED) 1. REMOVE ALL BURRS AND BREAK SHARP EDGES. 2. DIMENSION(S) APPLY AFTER FINISH. 3. ALL BENDS TO BE 90°. 4. 63° MAX. MACHINE FINISH. 5. INTERPRET DRAWING PER ANSI/ASME Y14.5M-1994	
BOM NUMBER		SHEET NUMBER	
CAMARILLO, CALIFORNIA, USA		1 OF 1	
DRAWING NUMBER		SIZE	
002-0323		B	
		REV	
		-	