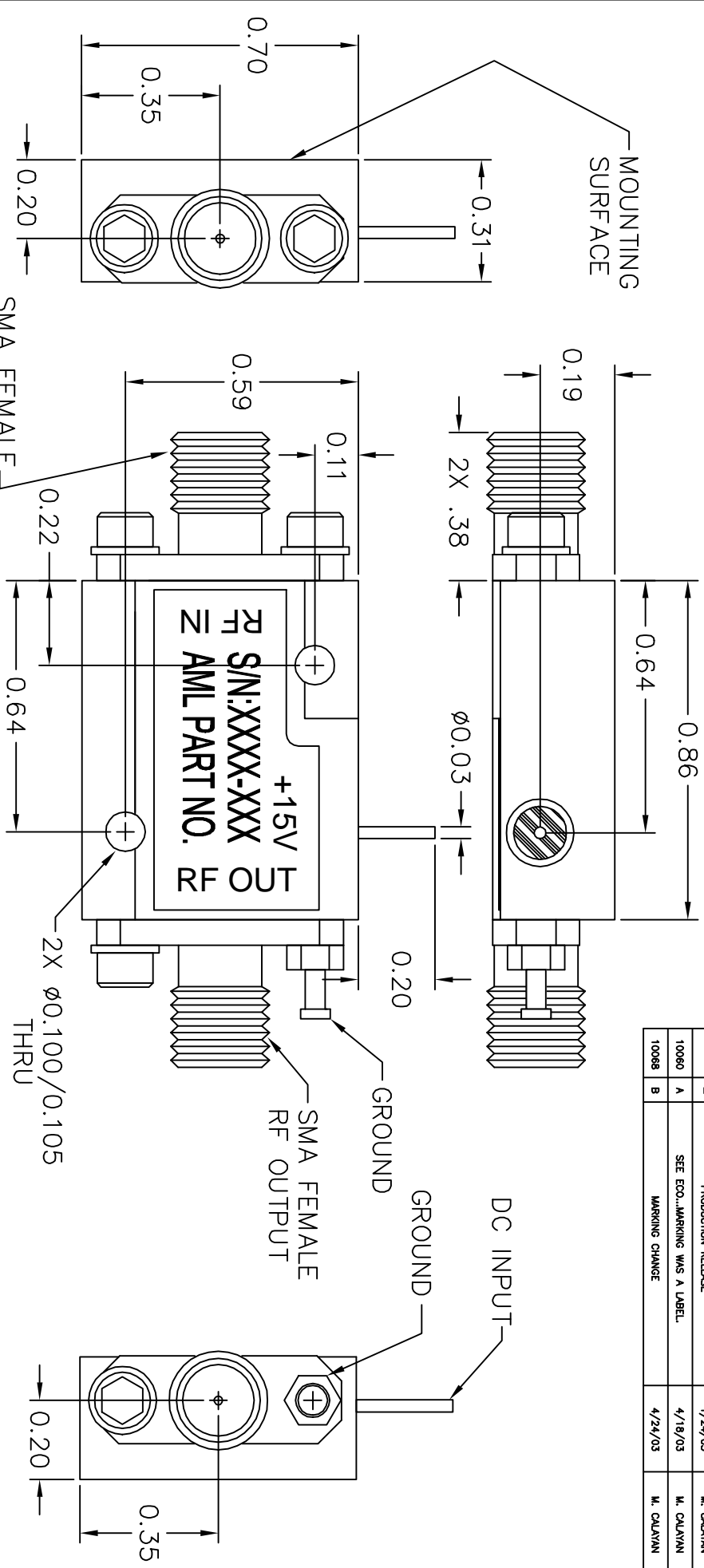


REVISIONS				
ECR#	REV	DESCRIPTION	DATE	APPROVED
	-	PRODUCTION RELEASE	1/24/03	M. CALAVAN
	A	SEE ECO..MARRING WAS A LABEL.	4/18/03	M. CALAVAN
	B	MARRING CHANGE	4/24/03	M. CALAVAN



- NOTES:
1. FINISH: EPOXY PRIMER PER MIL-P-23377, CLASS 2, EPOXY TOP COAT PER MIL-C-22750, CLASS 2, TYPE 2, GRAY NO.26307 PER FED-STD-595 APPLIED PER MIL-C-22751 TOTAL THICKNESS .002-.003. MOUNTING SURFACE CONNECTORS AND MOUNTING SCREWS TO BE FREE FROM PAINT.
  2. MARK AS SHOWN IN BLACK PER MIL-STD-130. MARK SERIAL NUMBER AND DATE CODE AS PER TRAVELER.

UNLESS OTHERWISE SPECIFIED DIMENSIONS ARE IN INCHES DECIMALS & ANGLES XXX ± .000		DRAWN BY SH		CHECK BY SH	
FINISH NICKEL PLATE PER MIL-C-26074		DESIGNED BY SH		DATE	
MATERIAL K0VAR		APPROVED		DATE	
FINISH NICKEL PLATE PER MIL-C-26074		ENGR		ENGR	
MIL-C-26074		MFG ENGR		MFG ENGR	
DD NOT SCALE DRAWING		QA		RELEASED BY:	
TITLE: OUTLINE, SP2 2-6 GHZ AMP		SCALE: 4X		DATE: 10/24/02	
GENERAL FABRICATION NOTES: (UNLESS OTHERWISE NOTED)		SHEET NUMBER 1 OF 1		DRAWING NUMBER 002-0241	
1. DIMENSIONS APPLY AFTER FINISH.		2. ALL BENDS TO BE 90°.		3. MAX. MACHINE FINISH.	
4. 5/32" MAX. MACHINE FINISH.		CAMBRILLD, CALIFORNIA, USA		SIZE B	
		REV B			