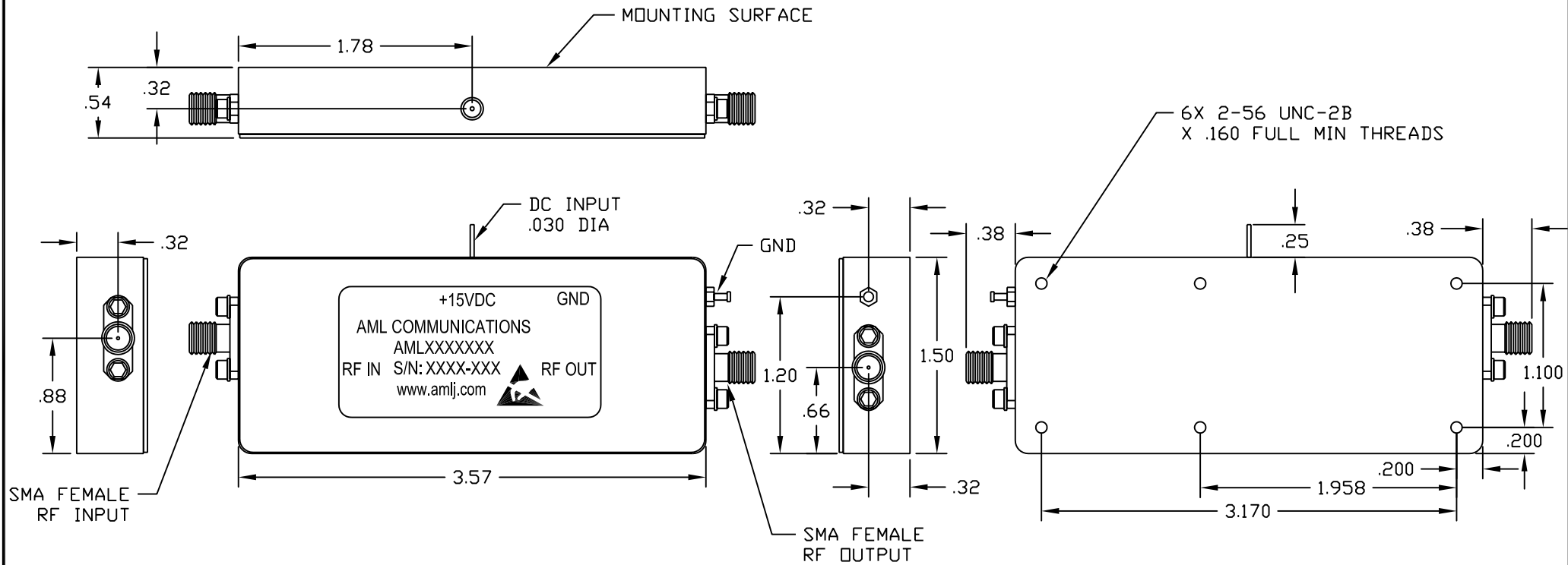


This Document is the property of AML Communications, Inc. The information contained in this Document shall not be reproduced, copied, released or made available to any third parties without prior written authorization. Utilizing information contained in this Document for manufacture or sale of products without prior written authorization is strictly prohibited.

REVISIONS				
ECD#	REV	DESCRIPTION	DATE	APPROVED
	-	RELEASE	10/14/03	J. HICKMAN



NOTES:

1. MARK LABEL (113-0022) AS SHOWN. MARK SERIAL NUMBER, DATE CODE AND MODEL NUMBER AS PER TRAVELER.

UNLESS OTHERWISE SPECIFIED DIMENSIONS ARE IN INCHES TOLERANCES ARE: DECIMALS .XX ± 0.03 ANGLES ± 5° .XXX ± 0.010	 THIRD ANGLE PROJECTION	DRAWN BY JH CHECK BY SH	TITLE: OUTLINE CATALOG (CP7)	 CAMARILLO, CALIFORNIA, USA	
		DESIGNED BY			BOM NUMBER
MATERIAL ALUM ALLOY		ENGR	SCALE: NTS DATE: 10/13/03	SHEET NUMBER 1 OF 1	SIZE B
FINISH NICKEL		ENGR	GENERAL FABRICATION NOTES: (UNLESS OTHERWISE SPECIFIED) 1. REMOVE ALL BURRS AND BREAK SHARP EDGES .005 MAX. 2. DIMENSION(S) APPLY AFTER FINISH. 3. MAX. MACHINE FINISH. 4. INTERPRET DRAWING PER ANSI/ASME Y14.5M-1994		
DO NOT SCALE DRAWING		MFG ENGR QA	RELEASED BY:		